

# Foynes to Limerick Road Improvement Scheme

# Foynes to Limerick Road Improvement Scheme



## Amendments to Route Corridor Option 3 (Orange)

There have been four amendments to Route Corridor Option 3 (Orange) since the public consultation in March 2015 as described below:

- Moving the corridor by approximately 350m to the north in the townlands of Rincullia and Craggs to avoid a sensitive ecological habitat along the Ahacronane River.
- Moving the corridor by approximately 250m to the east in the townlands of Boolaglass and Nantinan to further avoid a Cashel in Milltown North which is subject to a Preservation Order under the National Monuments Acts.
- Moving the corridor by approximately 100m to the west in the townland of Kyletaun to further avoid St Joseph's Cemetery.
- Including a section of Route Corridor Option 1 (Red) to connect with the existing N69 to the west of Askeaton through the townlands of Ballyellinan, Ballycullen and Cloonreask.

## What Happens Next?

The design of the road alignment within the Preferred Route Corridor, including side roads and junctions, will be developed, modified and refined as a result of further investigation, including comments and feedback from stakeholders (including direct consultations with property owners and interested parties that may be impacted); environmental, land, and geotechnical surveys; ongoing refinement of the design and assessments by the various environmental and technical specialists.

The Project Team will undertake all of the various environmental and technical assessments whilst continuing to develop the design of the alignment with the objective of seeking to avoid, reduce and mitigate potential impacts. This process will culminate in the publication of an Environmental Impact Statement and Statutory Orders in accordance with the relevant legislation for the development consent process. A Public Hearing into the proposal will then be conducted by An Bord Pleanála.

## Anticipated Programme

Stage
Public Consultation for Route Corridor Options
Public Display of Preferred Route Corridor
Design and Environmental Assessment
The Statutory Process

## Further Information

Drawings outlining the preferred route corridor will be available to view at the Mid West National Road Design Office and on the project website. For further information on this project or to offer feedback or comments on the preferred route corridor, contact details are as follows:

**Post:** Mid West National Roads Design Office,  
Limerick City and County Council,  
Lissanalta House, Dooradoyle Road, Dooradoyle, Limerick

**Phone:** 061 496800

**Email:** foynes@midwestroads.ie

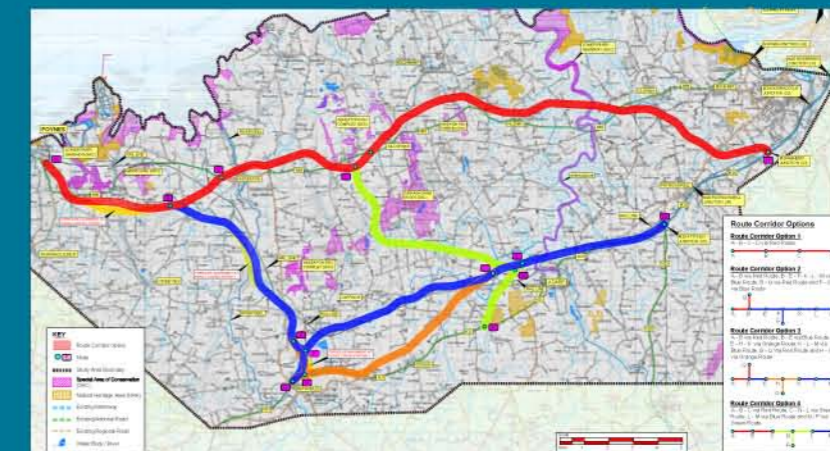
**Website:** www.foynelimerick.ie

The closing date for receipt of feedback or comments on the preferred route corridor is  
**Friday 15<sup>th</sup> January 2016.**

## Public Display

## Preferred Route Corridor | December 2015

Shannon-Foynes has been designated a Core Port under EU legislation (Trans European Transport Network TEN-T) which requires a high quality road to be provided between the port of Foynes and the core transport network in the vicinity of Limerick.



In March 2015, Limerick City & County Council held a Public Consultation to present four route corridor options for the Foynes to Limerick Road Improvement Scheme (see drawing above). Since then, the route corridor options, together with the feedback received from the public, have been assessed under the headings of Environment, Economy, Safety, Accessibility & Social Inclusion and Integration.

The Project Team (Mid West National Road Design Office and Roughan & O'Donovan - AECOM Alliance Consulting Engineers) has now identified a Preferred Route Corridor which is Route Corridor Option 3 (Orange) as shown overleaf.

The preferred route corridor is indicative and 300m wide, within which the road alignment is likely to be developed. Junction locations and types will be developed during the route development process. The purpose of the public display is to inform the public of the preferred route corridor and to afford the opportunity for the public to engage in the process and to raise queries, concerns and comments for consideration as part of the detailed design of the road alignment within the preferred route corridor.

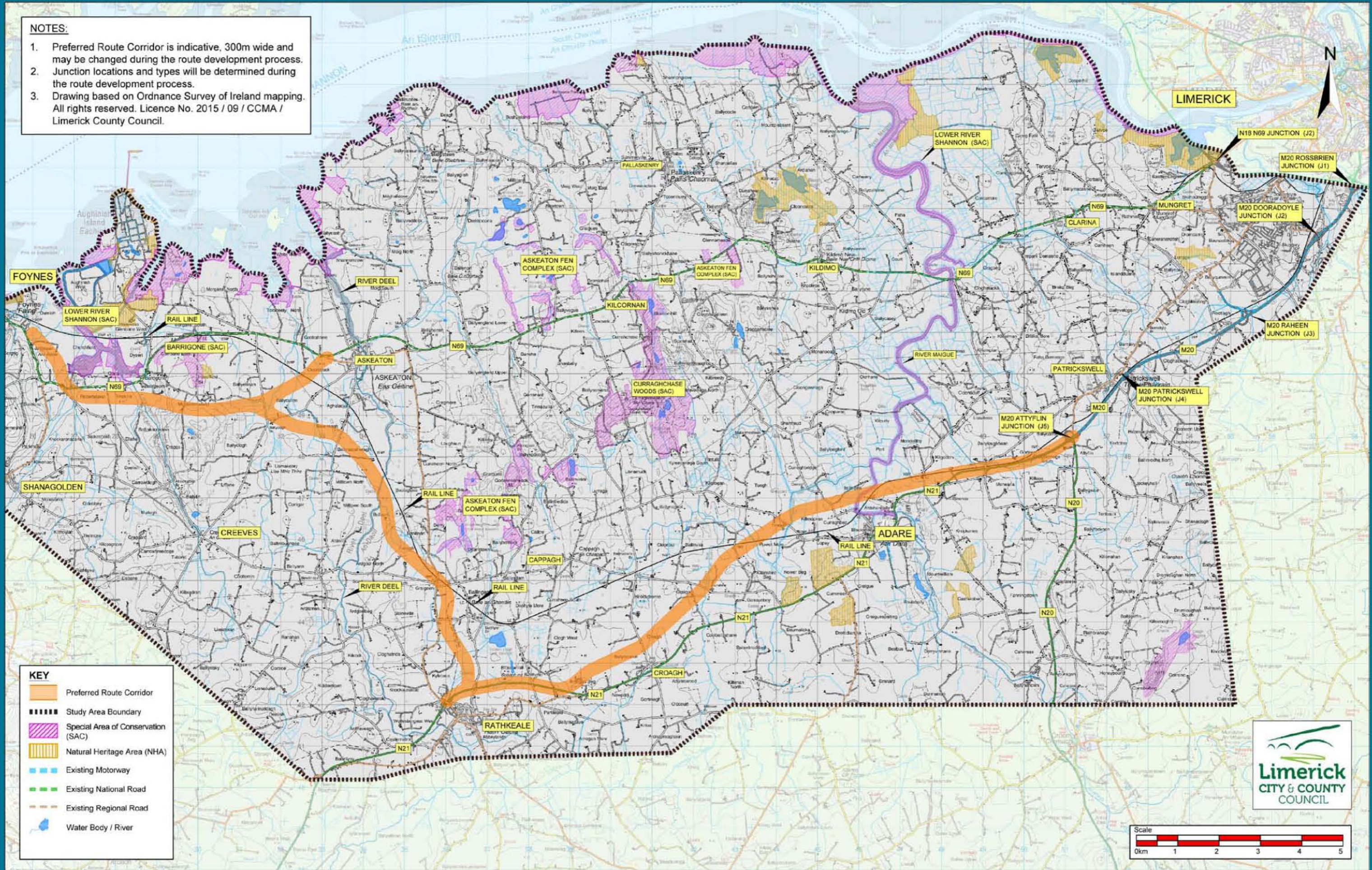
The project will provide a high quality road connection between the port of Foynes and Limerick, leading to reduced journey times, improved journey time reliability and improved safety between Foynes and Limerick for all road users. At the same time the option chosen will include a bypass of Adare, thus relieving a major traffic bottleneck on the National Road Network.





# Preferred Route Corridor - Foynes to Limerick Road Improvement Scheme

- NOTES:**
1. Preferred Route Corridor is indicative, 300m wide and may be changed during the route development process.
  2. Junction locations and types will be determined during the route development process.
  3. Drawing based on Ordnance Survey of Ireland mapping. All rights reserved. Licence No. 2015 / 09 / CCMA / Limerick County Council.



**KEY**

- Preferred Route Corridor
- Study Area Boundary
- Special Area of Conservation (SAC)
- Natural Heritage Area (NHA)
- Existing Motorway
- Existing National Road
- Existing Regional Road
- Water Body / River

