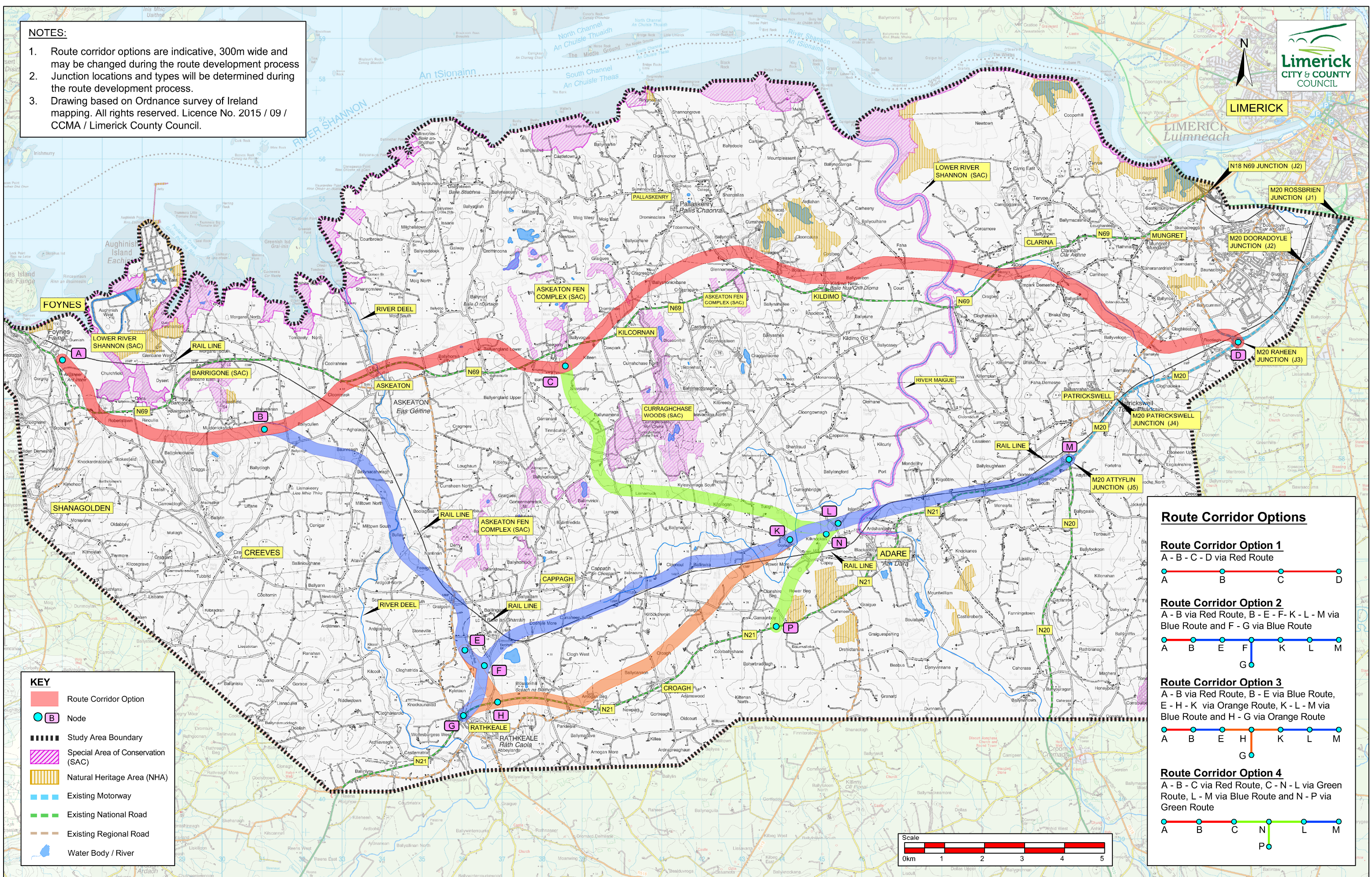


NOTES:

1. Route corridor options are indicative, 300m wide and may be changed during the route development process
2. Junction locations and types will be determined during the route development process.
3. Drawing based on Ordnance survey of Ireland mapping. All rights reserved. Licence No. 2015 / 09 / CCMA / Limerick County Council.



KEY

- Route Corridor Option
- Node
- Study Area Boundary
- Special Area of Conservation (SAC)
- Natural Heritage Area (NHA)
- Existing Motorway
- Existing National Road
- Existing Regional Road
- Water Body / River

Route Corridor Options

Route Corridor Option 1
 A - B - C - D via Red Route

Route Corridor Option 2
 A - B via Red Route, B - E - F - K - L - M via Blue Route and F - G via Blue Route

Route Corridor Option 3
 A - B via Red Route, B - E via Blue Route, E - H - K via Orange Route, K - L - M via Blue Route and H - G via Orange Route

Route Corridor Option 4
 A - B - C via Red Route, C - N - L via Green Route, L - M via Blue Route and N - P via Green Route

